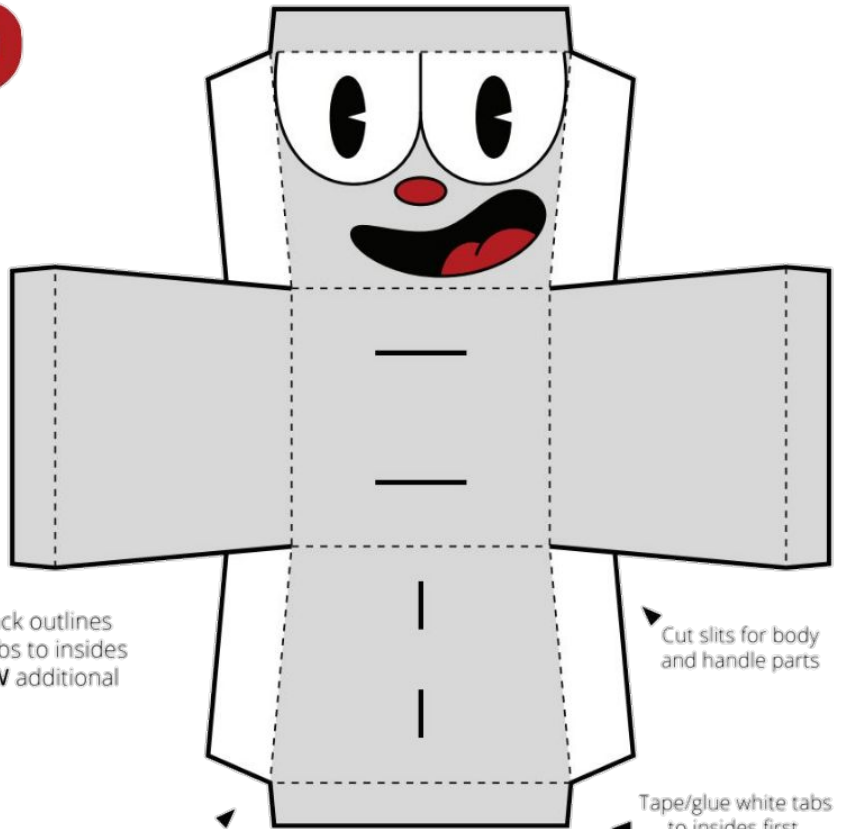
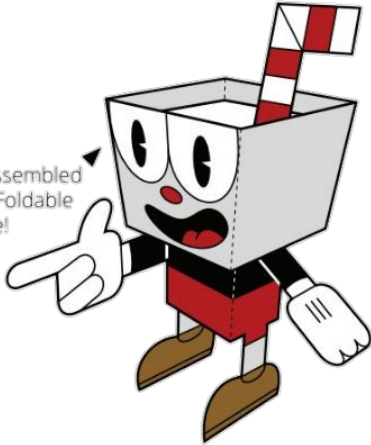


# CUPHEAD

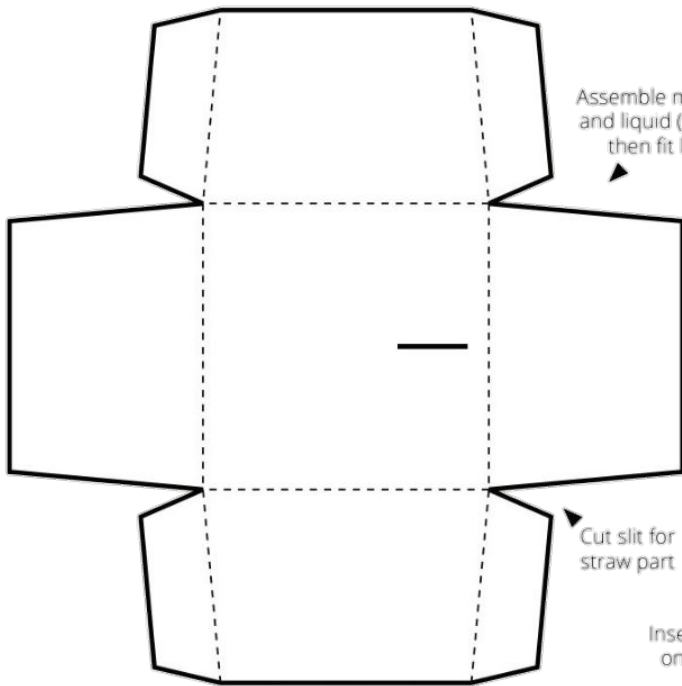
This is what your assembled CUPHEAD Paper Foldable will look like!



Cut slits for body and handle parts

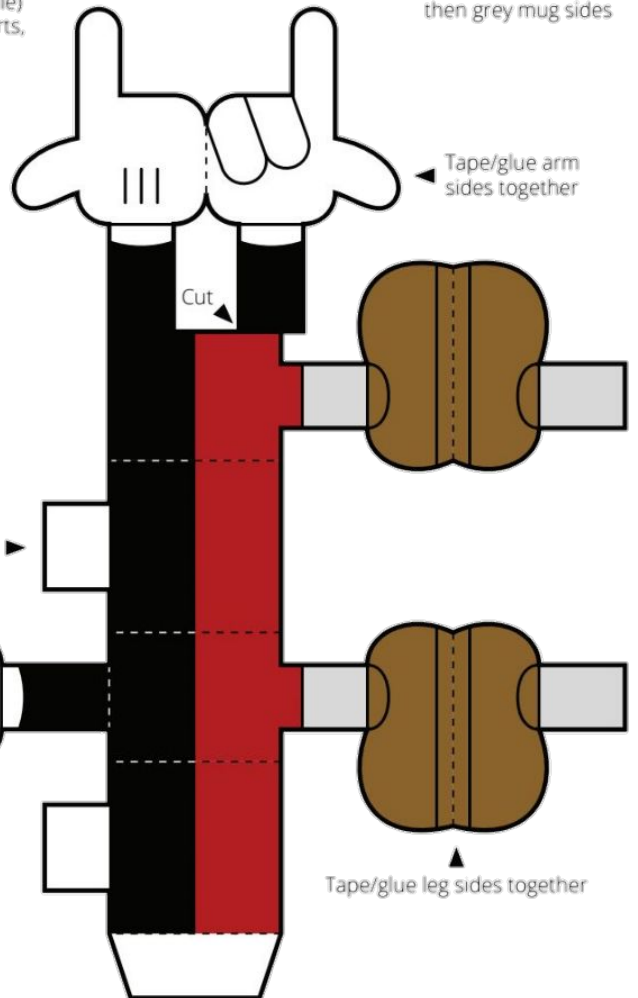
Tape/glue white tabs to insides first, then grey mug sides

**PRINT** template on card stock paper. **CUT** along solid black outlines and slits. **FOLD** on dashed lines. **TAPE** or **GLUE** folded tabs to insides (double-sided tape or glue stick recommended). **FOLLOW** additional assembly instructions and **HAVE FUN!**



Assemble mug (with handle) and liquid (with straw) parts, then fit liquid into cup

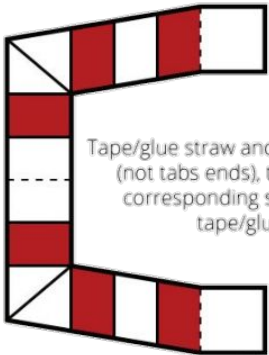
Cut slit for straw part



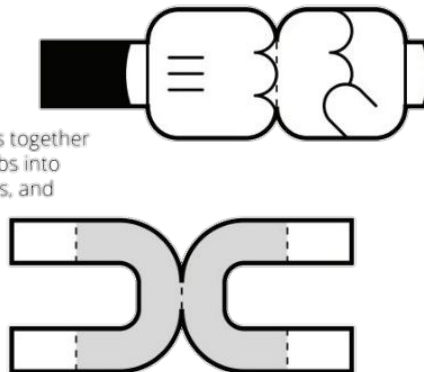
Tape/glue arm sides together

Insert tabs in slits on cup bottom

Tape/glue leg sides together



Tape/glue straw and handle sides together (not tabs ends), then insert tabs into corresponding slits, splay tabs, and tape/glue to insides



# CUPHEAD