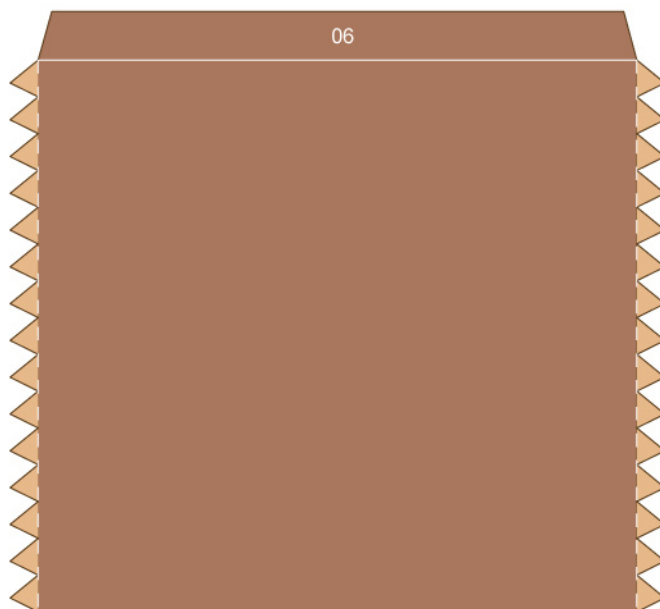
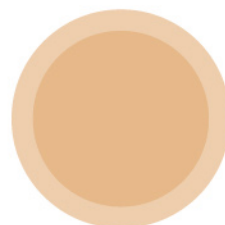


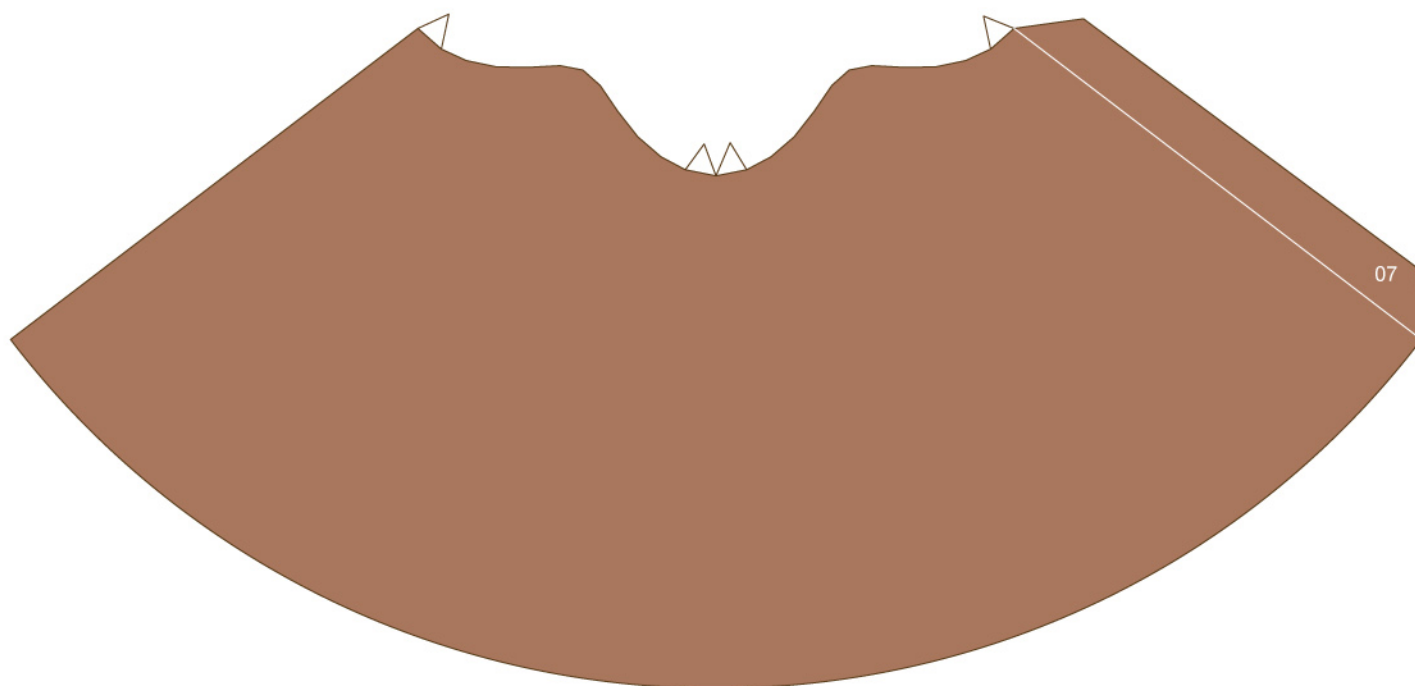
08



06

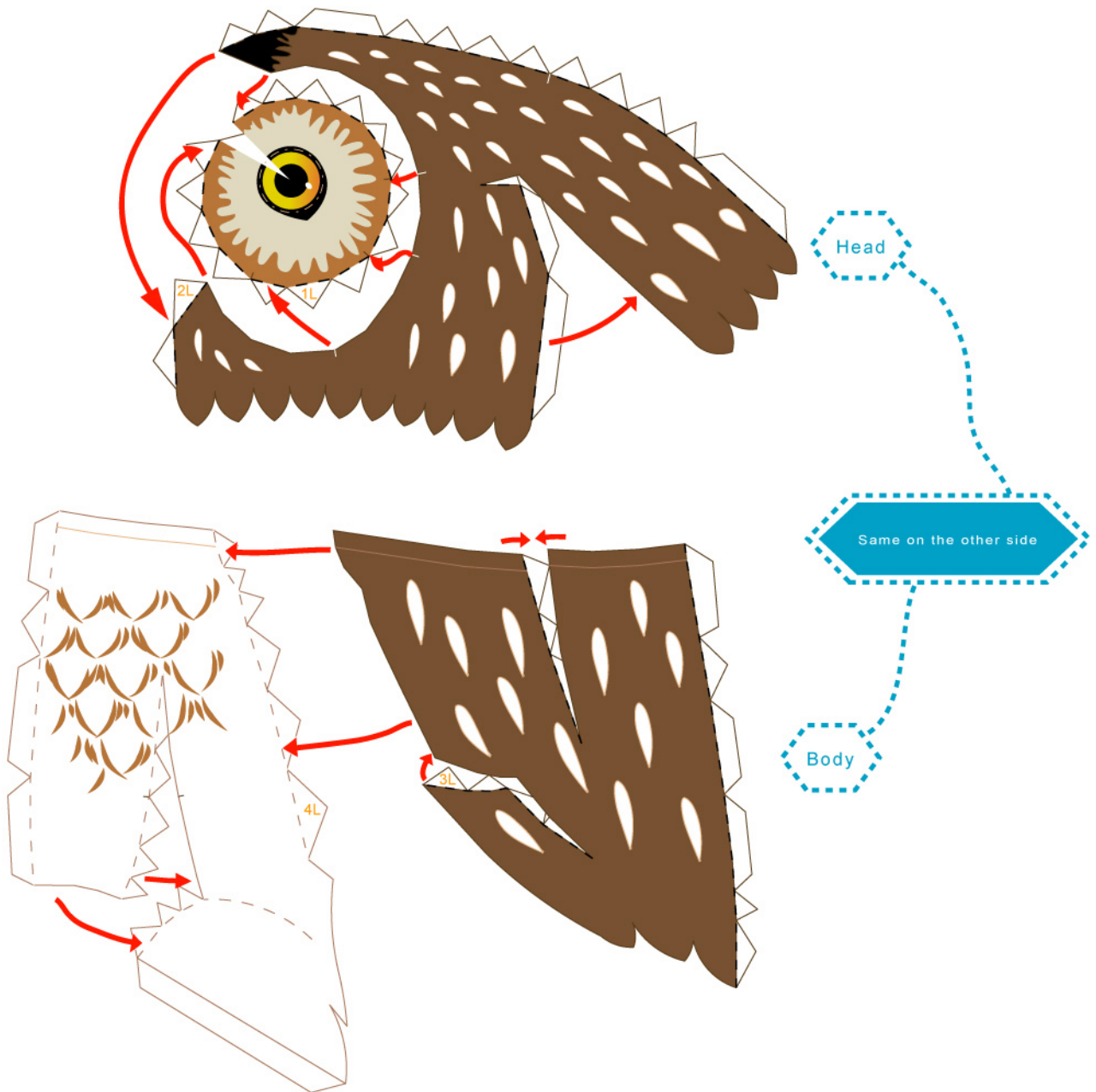
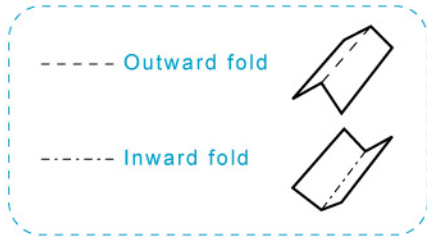


08

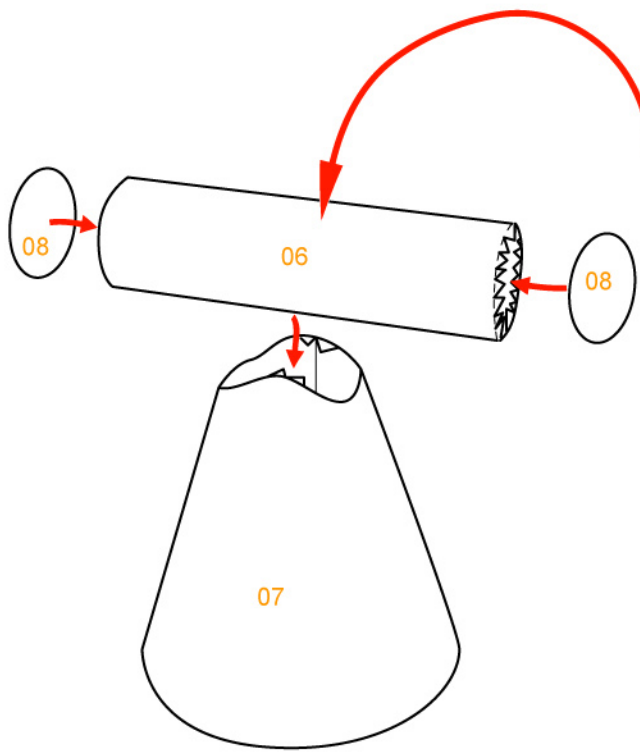
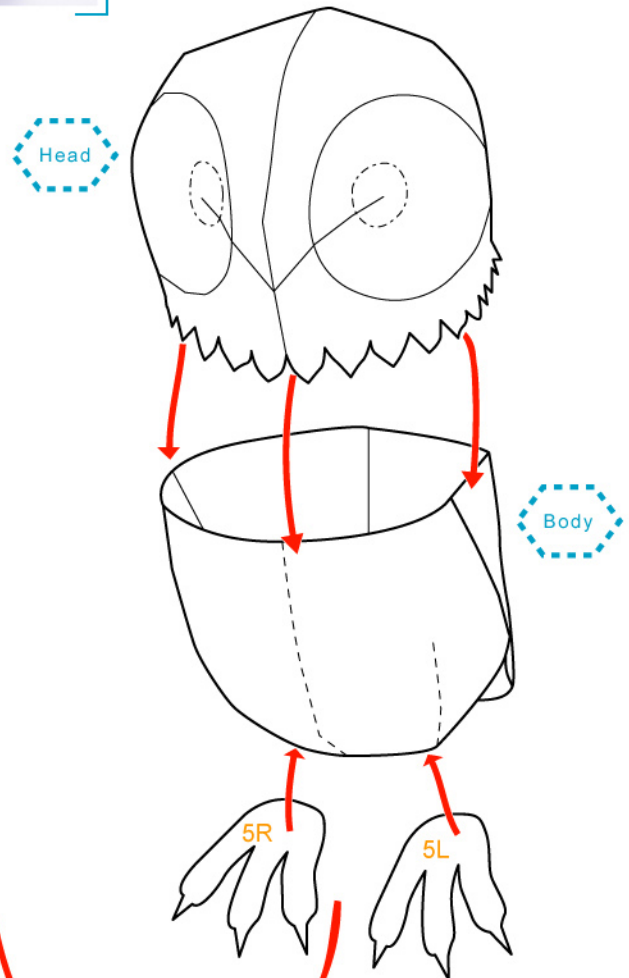


07

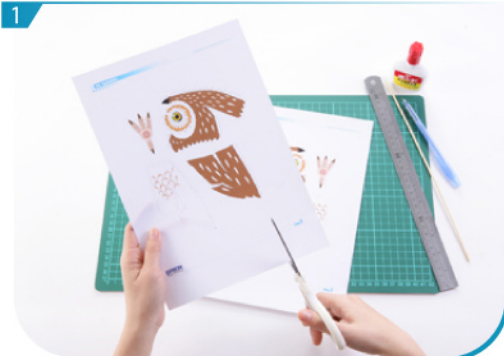
Assembly Instructions



Assembly Instructions



Basic steps



Separate all parts along the lines. Mark their identity on the back to avoid confusion.



Use a pen whose ink has dried out, or a tracer, to trace lines first.

Base



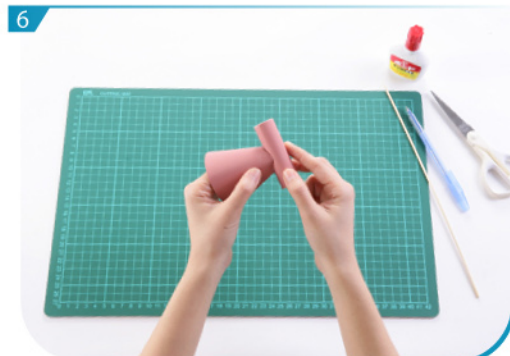
Use a cylindrical pen to roll 06 and 07.



Roll and glue 06 and then glue 08 to the end of both sides.

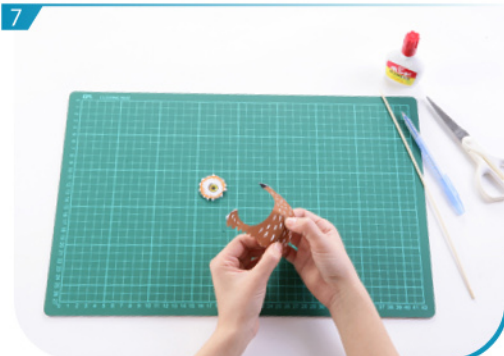


Cut spare parts.



Glue cylindrical stick and base.

Head



Fold and glue 1L and 2L respectively.



Glue the above parts together according to the assembly instructions to form the left part of the head.



9 The instructions for the right part of the head (1R and 2R) are the same as above.



10 Assemble the left and right parts of the head. The head is now done.

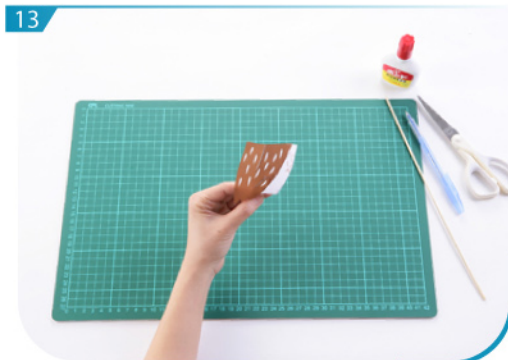
Body



11 Fold and glue 3L and 4L respectively.



12 Glue the above parts together according to the assembly instructions to form the left part of body.



13 The instructions for the right part of the body (3R and 4R) are the same as above.



14 Assemble the left and right parts of the body.



15 Roll and glue 5L and 5R respectively to form the legs.



16 Finally, assemble all the parts, and an owl is now done!